



On Oct. 1, 2011, the Bureau of Ocean Energy Management, Regulation and Enforcement (BOEMRE) was replaced by the Bureau of Safety and Environmental Enforcement (BSEE) and the Bureau of Ocean Energy Management (BOEM) as part of a major reorganization.

BSEE promotes safety, protects the environment, and conserves resources offshore through vigorous regulatory oversight and enforcement.

Key functions of BSEE include:

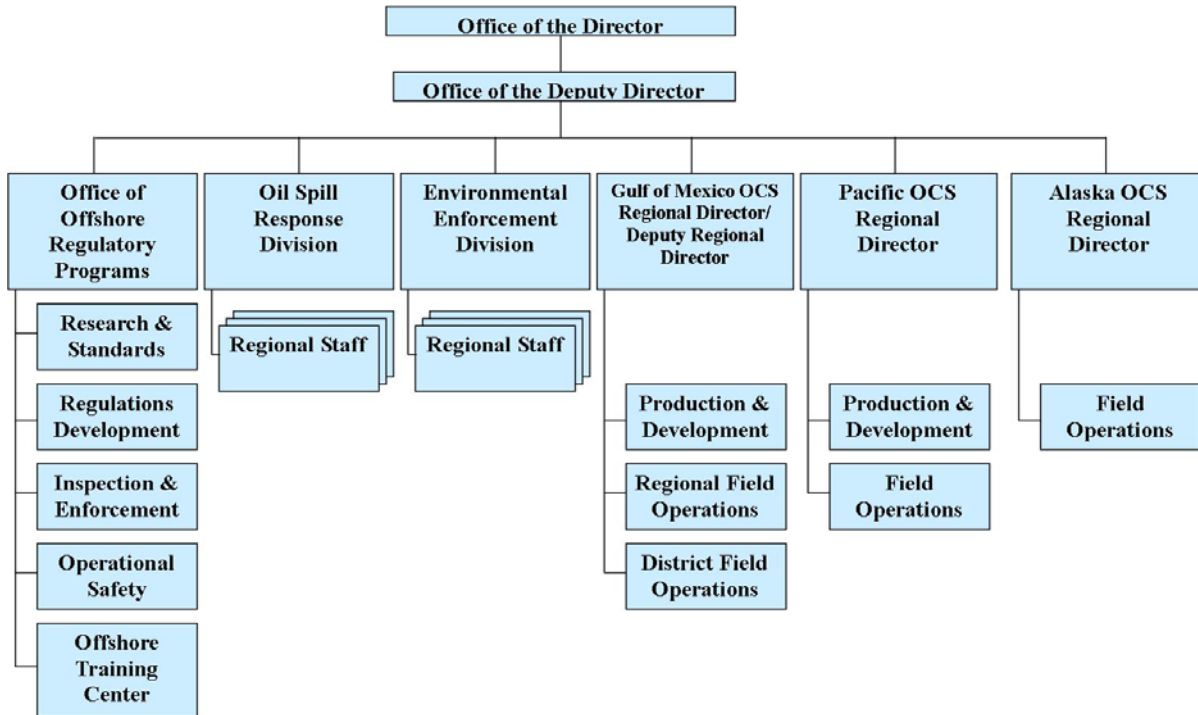
- An **Offshore Regulatory** program that develops standards and regulations to enhance safety and environmental protection for the exploration and development of offshore oil and natural gas on the U.S. Outer Continental Shelf (OCS). BSEE's three regional offices in New Orleans, La., Camarillo, Calif., and Anchorage, Alaska, review **Applications for Permit to Drill** and other operational permits and requests to ensure they comply with all regulations, including recently implemented enhanced drilling and workplace safety requirements.
- The **Oil Spill Response** division, which is responsible for reviews of industry Oil Spill Response Plans (OSRP) to ensure compliance with regulatory requirements. The division plays a central role in the development of policy, the dissemination of guidance and the oversight of oil spill response activities. The division oversees the Unannounced Oil Spill Drill program and works closely with other federal agencies, such as the U.S. Coast Guard and the Environmental Protection Agency, to continually enhance response technologies and capabilities.
- The newly created **Environmental Enforcement Division** focuses on compliance by operators with all applicable environmental regulations, as well as ensuring that operators adhere to the stipulations of their approved leases, plans and permits.

Drilling rig and production facility **inspections** are conducted by agency personnel using multi-person inspection teams. Inspections may result in the issuance of **Incidents of Non-Compliance** and the issuance of **civil penalties** for regulatory infractions. In response to serious offshore incidents, the agency conducts **accident investigations**.

BSEE maintains the new **National Offshore Training and Learning Center** with curricular materials developed for new inspectors and in-service training for experienced inspectors, as well as courses developed for other job categories.

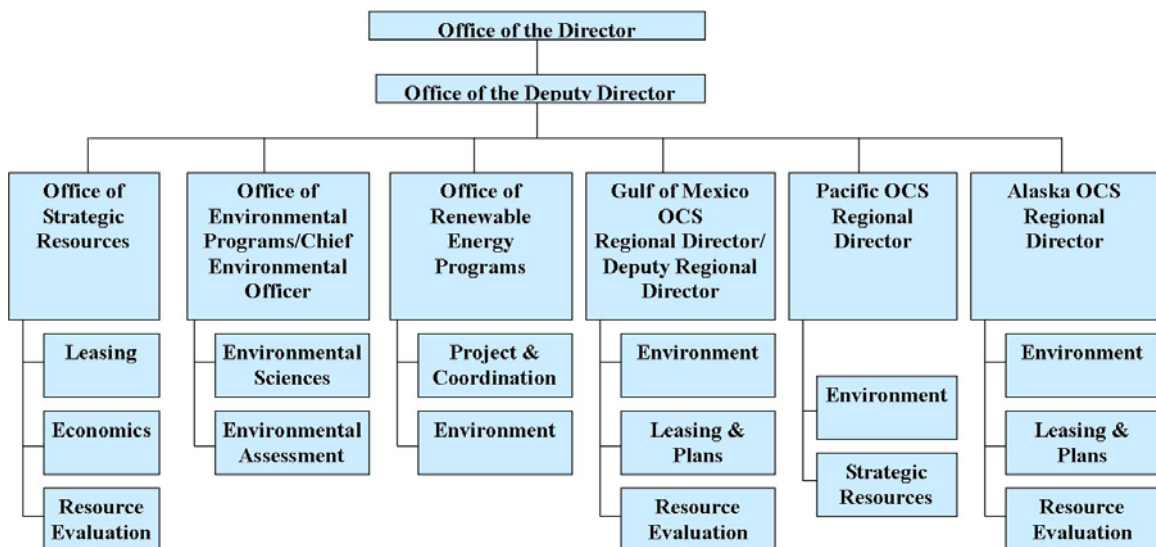
The bureau also operates **Ohmsett**, the National Oil Spill Response Research and Renewable Energy Test Facility, in Leonardo, N.J., and manages the **Technology Assessment and Research** program to advance research in safety, engineering and offshore standards.

## *BSEE Organizational Structure*



## *Bureau of Ocean Energy Management (BOEM)*

BOEM manages the exploration and development of the nation's offshore resources. It seeks to appropriately balance economic development, energy independence, and environmental protection, through oil and gas leases, renewable energy development and environmental reviews and studies. BOEM's organizational structure includes:



## *Office of Natural Resource Revenue (ONRR)*

ONRR split from BOEMRE on Oct. 1, 2010, and moved under the Department of the Interior's Assistant Secretary for Policy, Management and Budget. ONRR is responsible for the collection and disbursement of revenue from federal and American Indian lands onshore and on the OCS.