

A large offshore oil rig is silhouetted against a sunset sky. The rig's complex structure of pipes, platforms, and a tall derrick is visible. The sun is low on the horizon, casting a warm orange glow over the scene. The ocean surface is dark with some whitecaps.

Ethics in Government, Ethics in Energy Debate: Of Morons, Oxymorons, and Statistics

January 19, 2006
L. Poe Leggette, Partner
Fulbright & Jaworski L.L.P.
pleggette@fulbright.com
202-662-4646

FULBRIGHT
& Jaworski L.L.P.

When You Think ENERGY,TM
Think Fulbright.

Jack Abramoff



Bribery (18 U.S.C. § 201)

- "Whoever corruptly gives or promises anything of value to any public official with intent to influence any official act shall be fined and imprisoned. . . ."
- "Whoever gives or promises anything of value to any public official, former public official, or person selected to be a public official because of any official act performed or to be performed shall be find and imprisoned. . . ."

18 U.S.C. § 1341

➤ Frauds and swindles

- ❖ Whoever, having devised or intending to devise any scheme or artifice to defraud...places in any post office or authorized depository for mail matter, any matter or thing whatever to be sent or delivered by the Postal Service...or delivered by any private or commercial interstate carrier...shall be fined under this title or imprisoned not more than 20 years, or both. If the violate affects a financial institution, such person shall be fined not more than \$1,000,000 or imprisoned not more than 30 years, or both.

18 U.S.C. § 1346

➤ Definition of “scheme or artifice to defraud”

- ❖ For the purpose of this chapter, the term “scheme or artifice to defraud” includes a scheme or artifice to deprive another of the intangible right of honest service.

18 U.S.C. § 207

(a)(1) Permanent Restrictions on all Officers and Employees of the Executive Branch and Certain Other Agencies.

- Any person who is an officer or employee of the executive branch of the United States and who, after the termination of his or her service, knowingly makes, with the intent to influence, any communication to or appearance before any officer or employee of any department, agency, court, of the United States on behalf of any other person in connection with a particular matter –

(A) in which the United States is a party or has a direct and substantial interest,

(B) in which the person participated personally and substantially as such officer or employee, and

(C) which involved a specific party or specific parties at the time of such participation,

Shall be punished as provided in section 216 of this title.

18 U.S.C. § 207

(a)(2) Two-Year Restrictions Concerning Particular Matters Under Official Responsibility.

- Any person who within 2 years after termination of his or her service or employment with the United States, knowingly makes, with the intent to influence, any communication to or appearance before any officer or employee of any department, agency, or court of the United States on behalf of any other person, in connection with a particular matter —

(A) in which the United States is a party or has direct and substantial interest,

(B) which such person knows or reasonably should know was actually pending under his or her official responsibility as such officer or employee within a period of 1 year before the termination of his service or employment with the United States and

(C) which involved a specific party or specific parties at the time it was so pending,

Shall be punished as provided in section 216 of this title.

18 U.S.C. § 207

(c) One-Year Restrictions on Certain Senior Personnel.

- any person who is an officer or employee of the executive branch of the United States and who, within 1 year after the termination of his or her service or employment as such officer or employee, knowingly makes, with the intent to influence, any communication to or appearance before any officer or employee of the department or agency in which such person served within 1 year before such termination, on behalf of any other person (except the United States), in connection with any matter on which such person seeks official action by any officer or employee of such department or agency, shall be punished as provided in section 216 of this title.

18 U.S.C. § 431

➤ Contracts by Member of Congress

- ❖ Whoever, being a Member of or Delegate to Congress...holds...any contract or agreement, made or entered into in behalf of the United States or any agency thereof...shall be fined under this title....

18 U.S.C. § 432

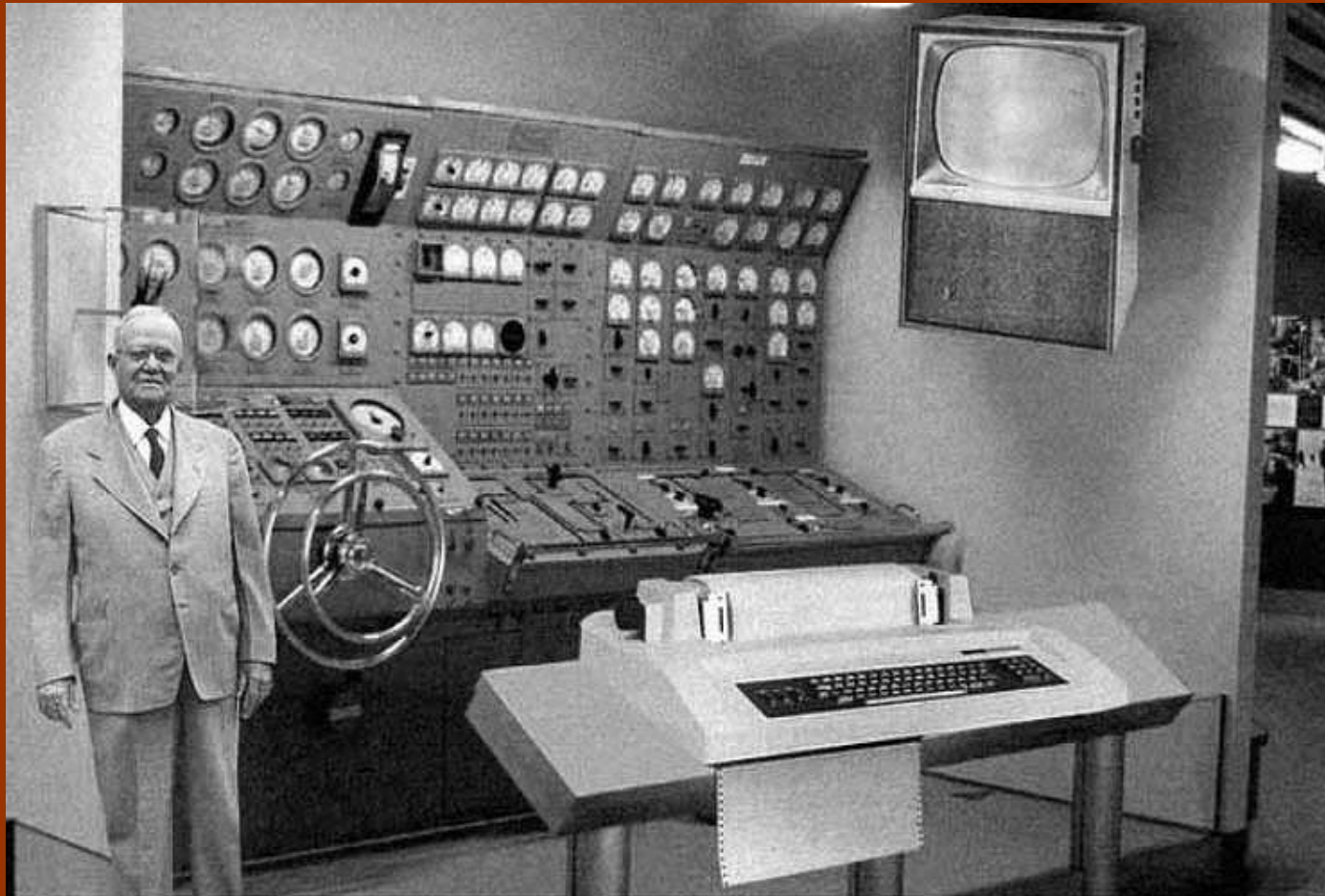
- Officer or employee contracting with Member of Congress
 - ❖ Whoever, being an officer or employee of the United States, on behalf of the United States or any agency thereof, directly or indirectly makes or enters into any contract, bargain, or agreement, with any Member of or Delegate to Congress...shall be fined under this title.

18 U.S.C. § 433

➤ Exemptions with respect to certain contracts

- ❖ Sections 431 and 432 of this title shall not extend to any contract or agreement made or entered into, or accepted by any incorporated company for the general benefit of such corporation; nor to...agreements or contracts or agreements of a kind which the Secretary of Agriculture may enter into with farmers. Any exemption permitted by this section shall be made a matter of public record.

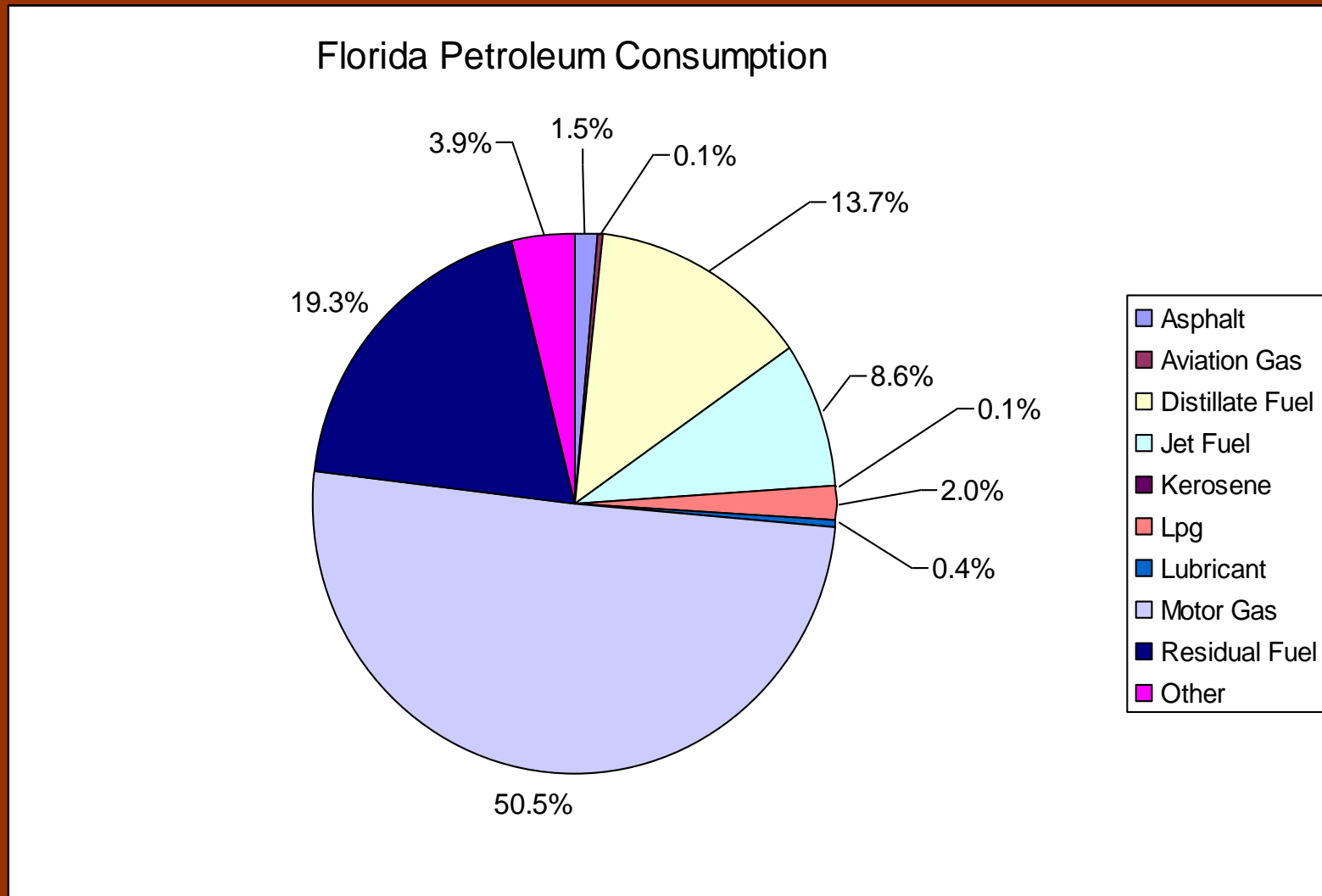
Predicting Resource Supply and Demand: *Popular Mechanics* 1954



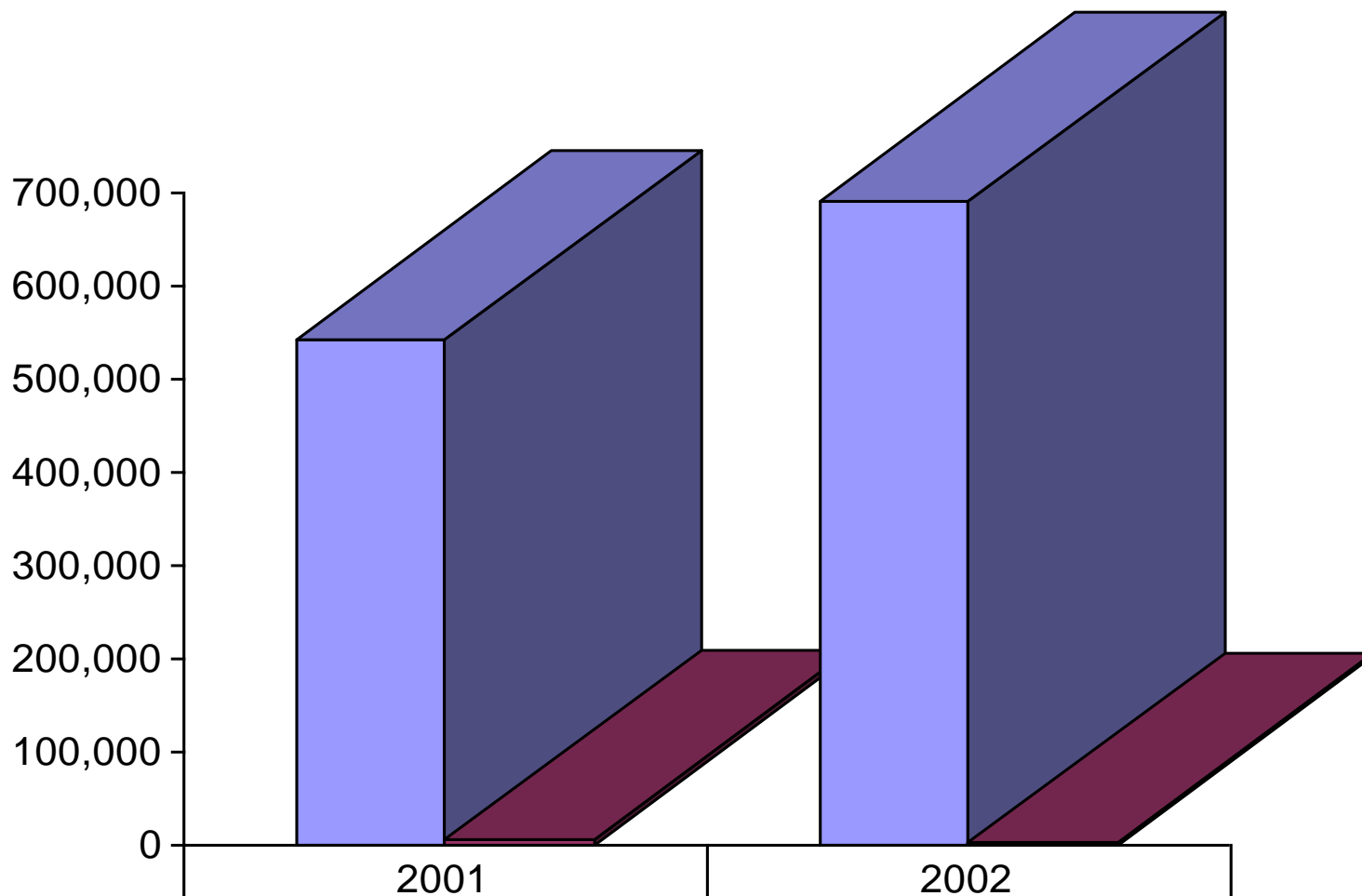
Scientists from the RAND Corporation have created this model to illustrate how a "home computer" could look like in the year 2004. However the needed technology will not be economically feasible for the average home. Also the scientists readily admit that the computer will require not yet invented technology to actually work, but 50 years from now scientific progress is expected to solve these problems. With teletype interface and the Fortran language, the computer will be easy to use.

In 2001, Florida's Petroleum Consumption was 358.6 million barrels.
Crude Oil Production in the state of Florida was 4.4 million barrels.

Source: U.S. Energy Information Administration



FLORIDA NATURAL GAS



■ Consumption (MMcf)

■ Production (MMcf)

543,143

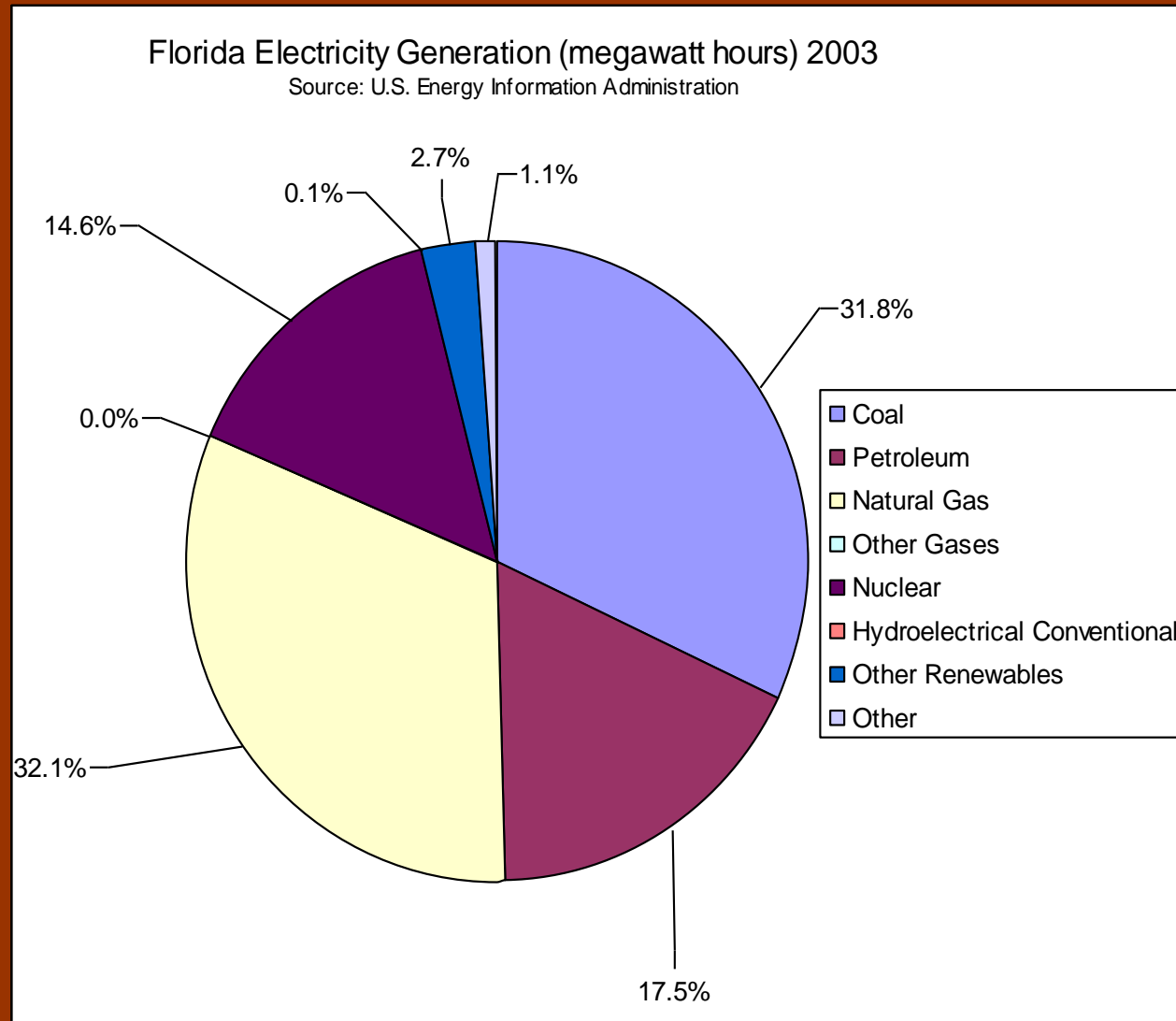
6,446

689,337

3,785

Source: U.S. Energy Information Administration

Florida Generated a total of **212,610,011** megawatt hours of Electricity in 2003

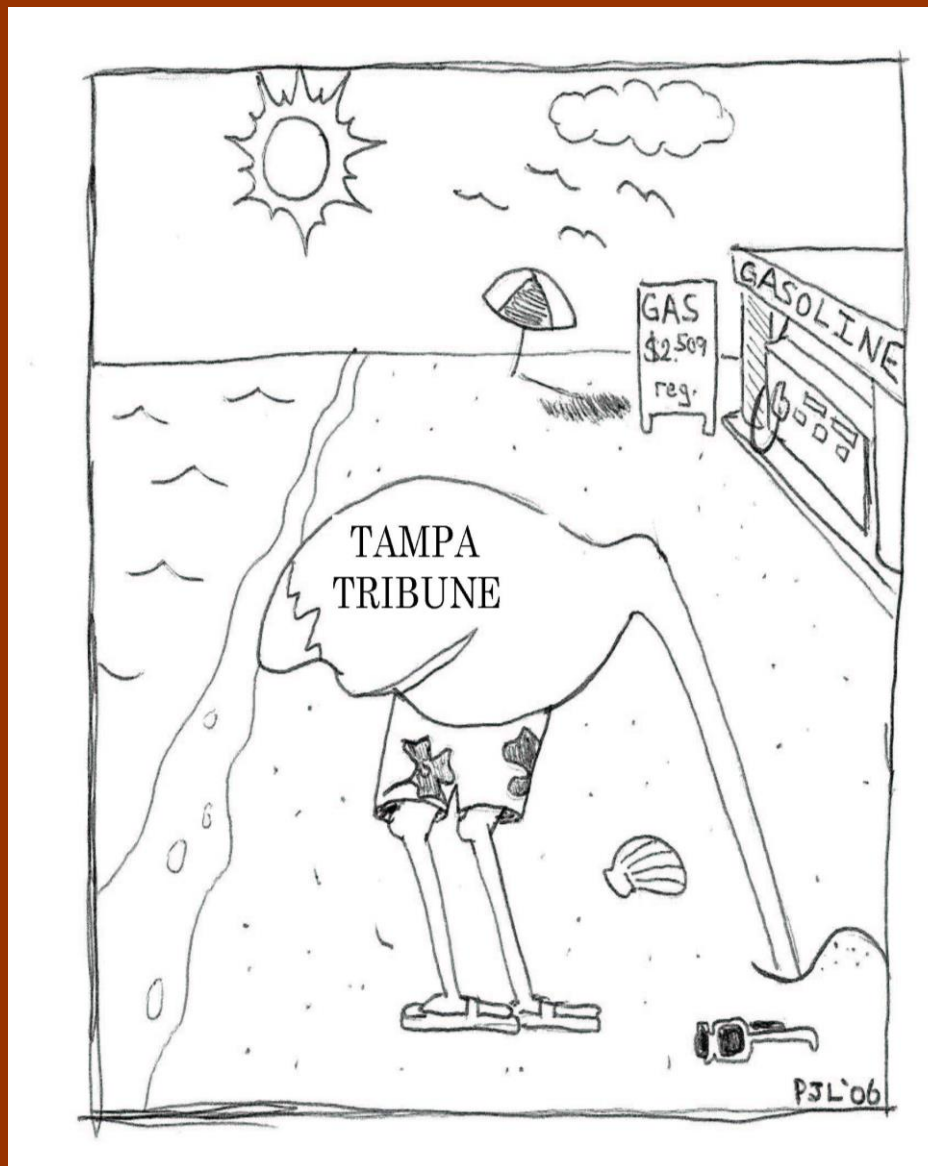












Virginia White Tailed Deer



Deer Could Present Record Road Hazard

More Vehicles Leading to More Crashes

By LEEF SMITH
Washington Post Staff Writer

It's as seasonal as the falling leaves and about as welcome as soaring gas prices, but the arrival of deer-mating season has many motorists girding for what officials predict could be a record year for deer crashes in the Washington suburbs.

Fairfax County police estimate that as many as 5,000 collisions involving deer occurred on county roads last year. The number of deer-related crashes reported in Montgomery County has held steady at about 2,000 for the past several years, but officials say the actual number of incidents is considerably higher.

Although many blame devel-

opment in suburbia for pushing deer onto the roadways in search of food, biologists say there are more deer crashes in large part because there are more cars.

"Even if you were able to reduce the deer population by half in a given period, it wouldn't make a difference if the traffic load is doubled," said Fairfax wildlife biologist Earl Hodnett. "You come up with the same number of collisions. That's part of what's going on right now."

Officials have been trying for years to curb the deer infestation that at its best infuriates homeowners by reducing their flower beds to bare soil and at

See DEER, C11, Col. 1

Mule Deer



2005 Annual Report

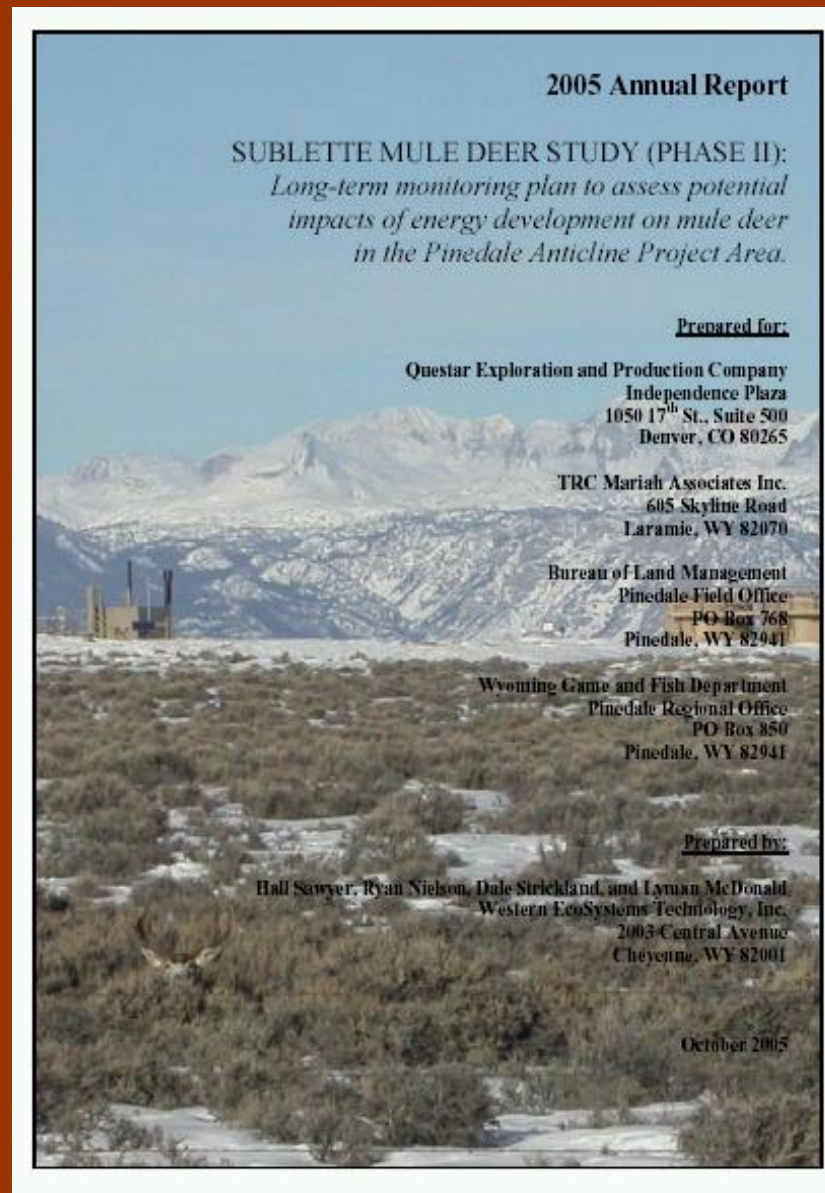


Figure 2.1

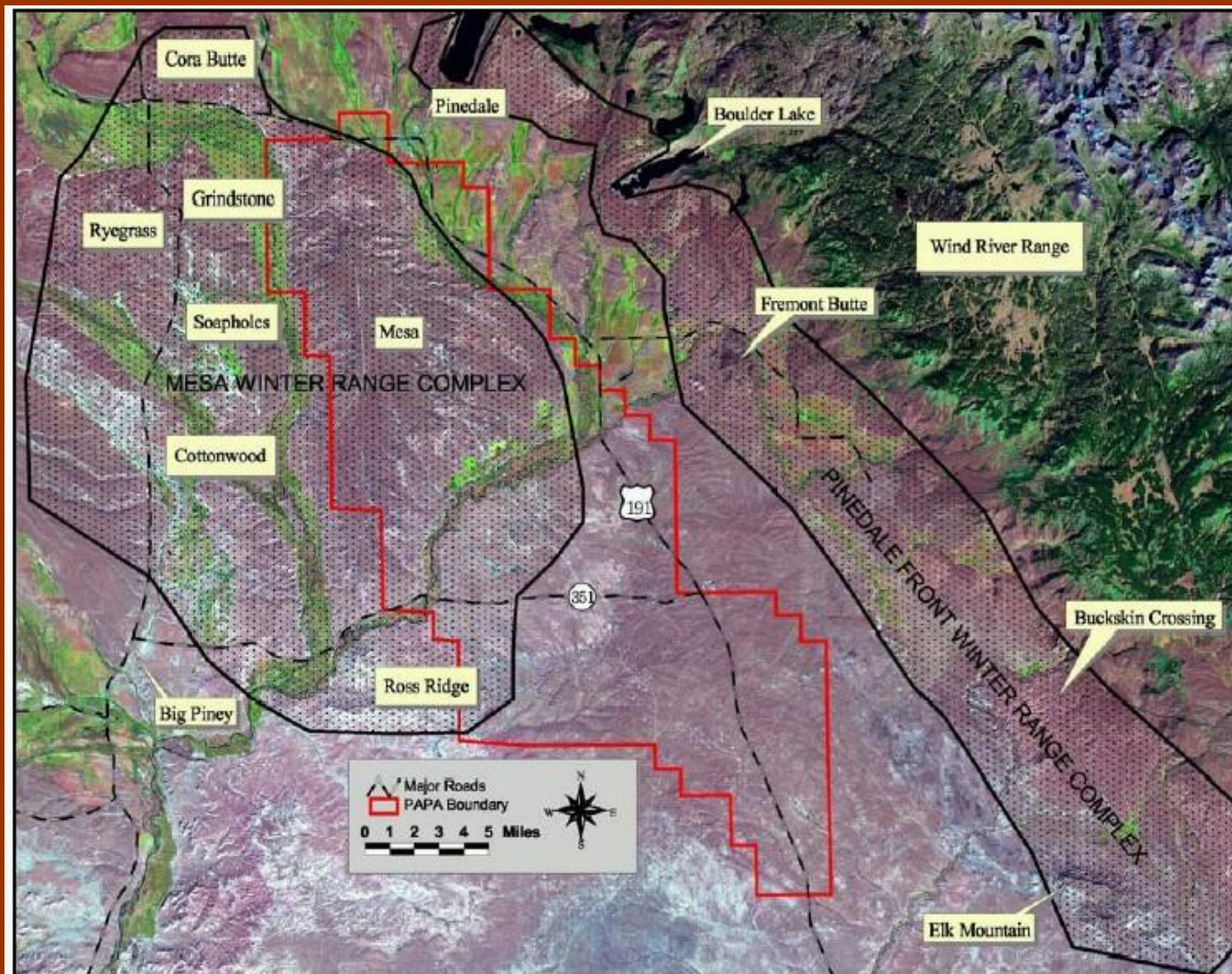


Figure 2.1 Location of the Mesa and Pinedale Front Winter Range Complexes.

Figure 2.4

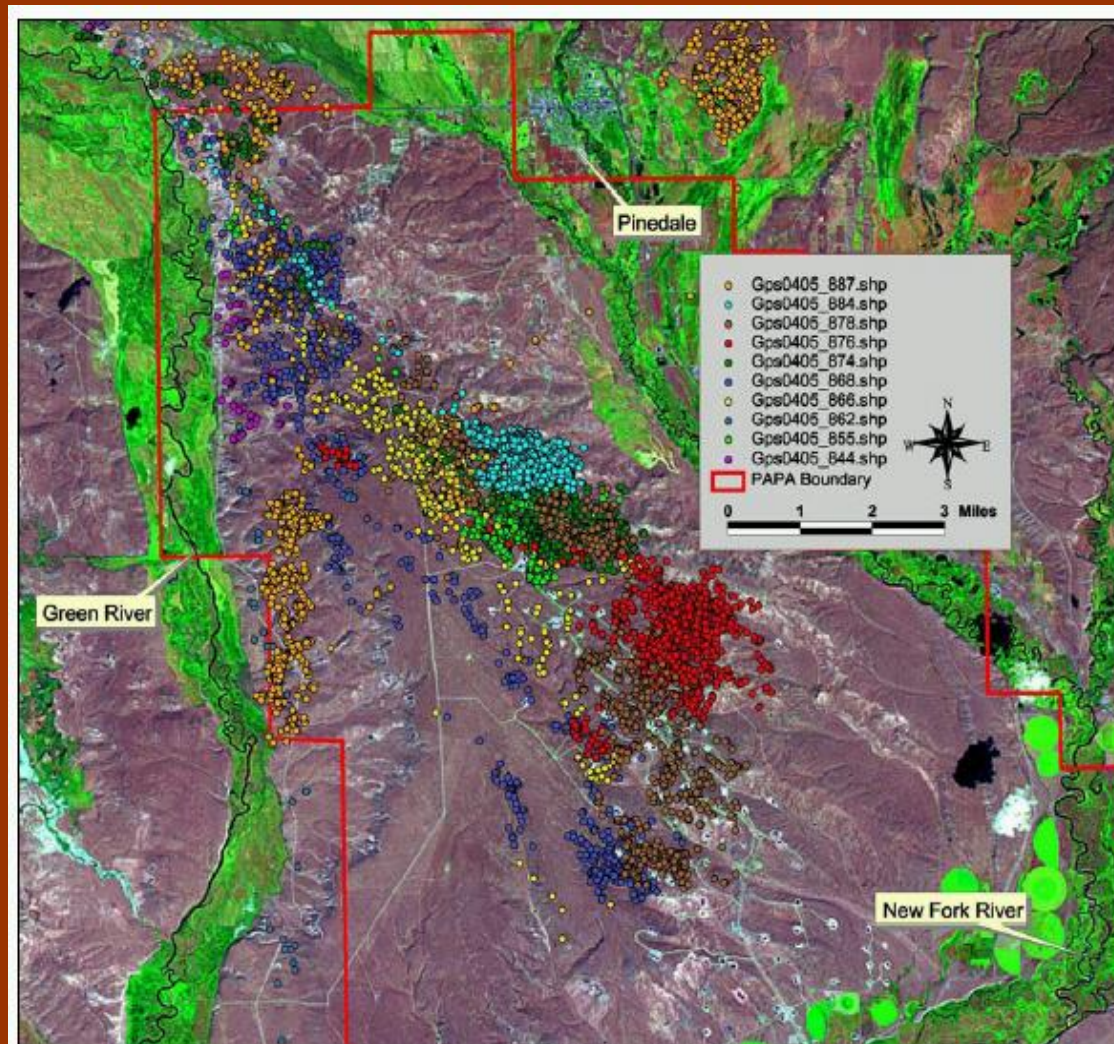


Figure 2.4. GPS locations ($n = 15,974$) collected from 10 deer on the Pinedale Anticline Project Area (PAPA), November 1, 2004 – April 15, 2005, overlaid on satellite image taken August 28, 2004.

Figure 2.12

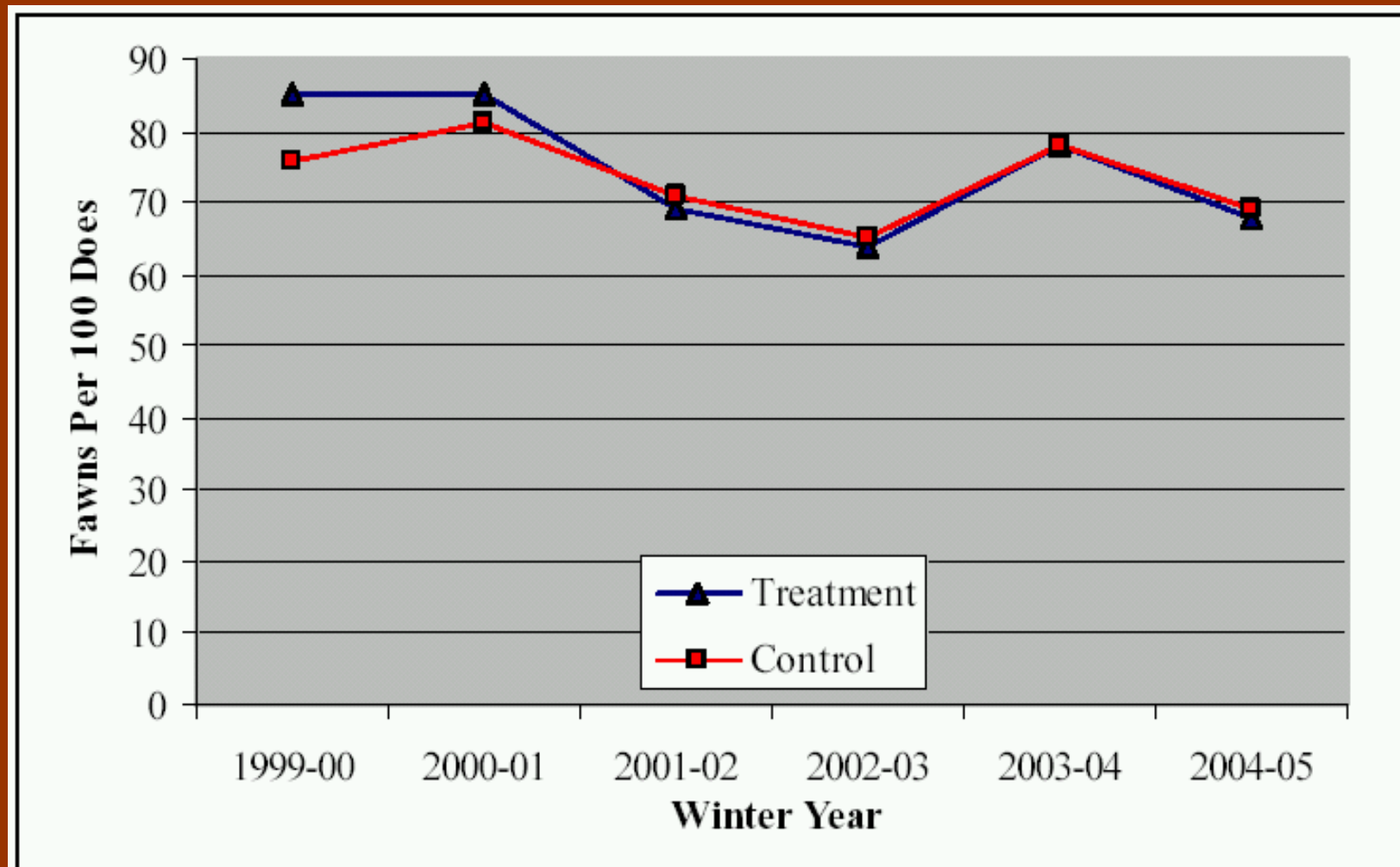


Figure 2.12 December fawn:doe ratios in treatment and control areas, 1999-2005.

Figure 2.13

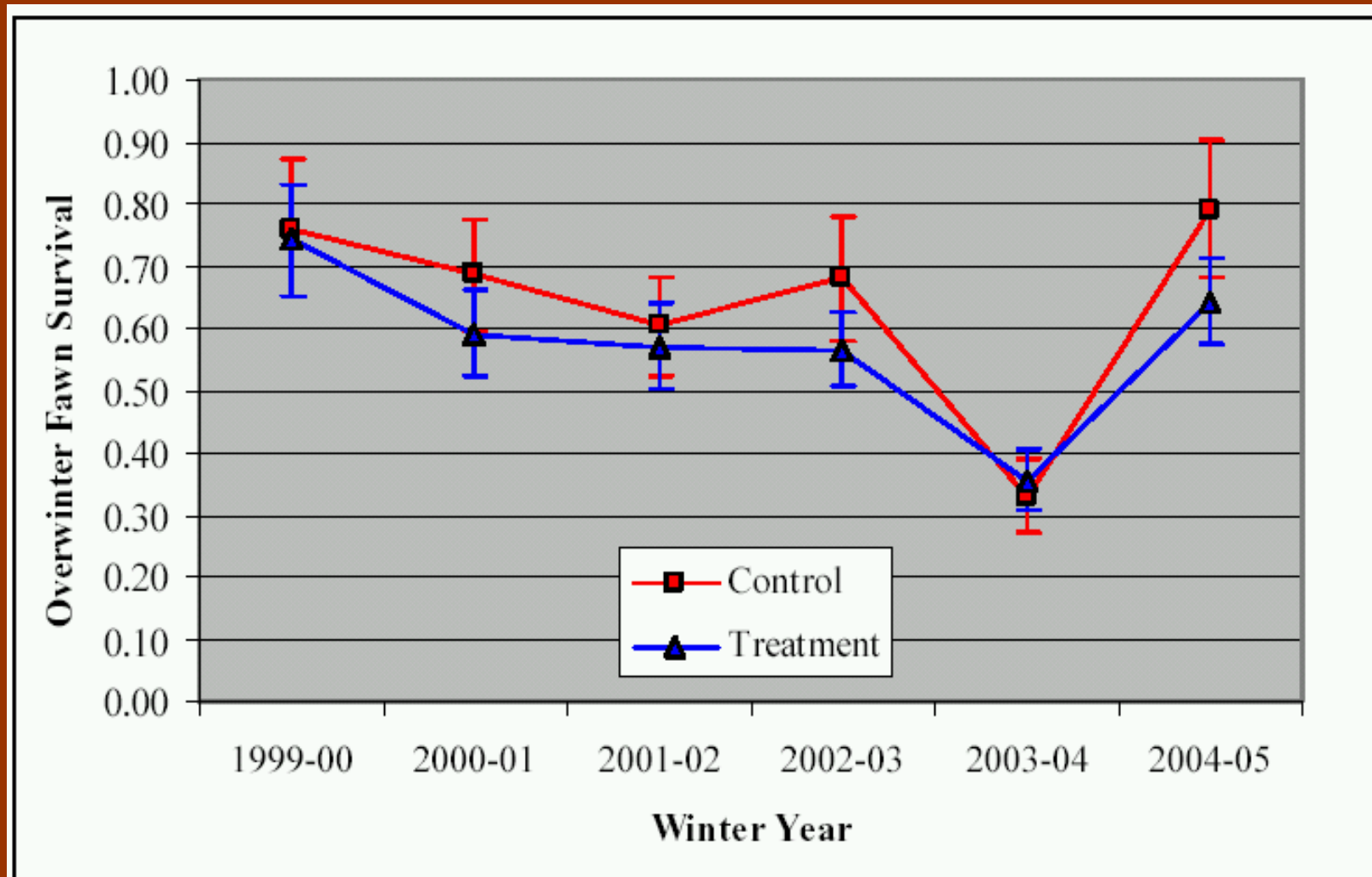


Figure 2.13 Estimated over-winter fawn survival and associated 90% confidence bands for treatment and control areas, 1999-2005.

Figure 2.14

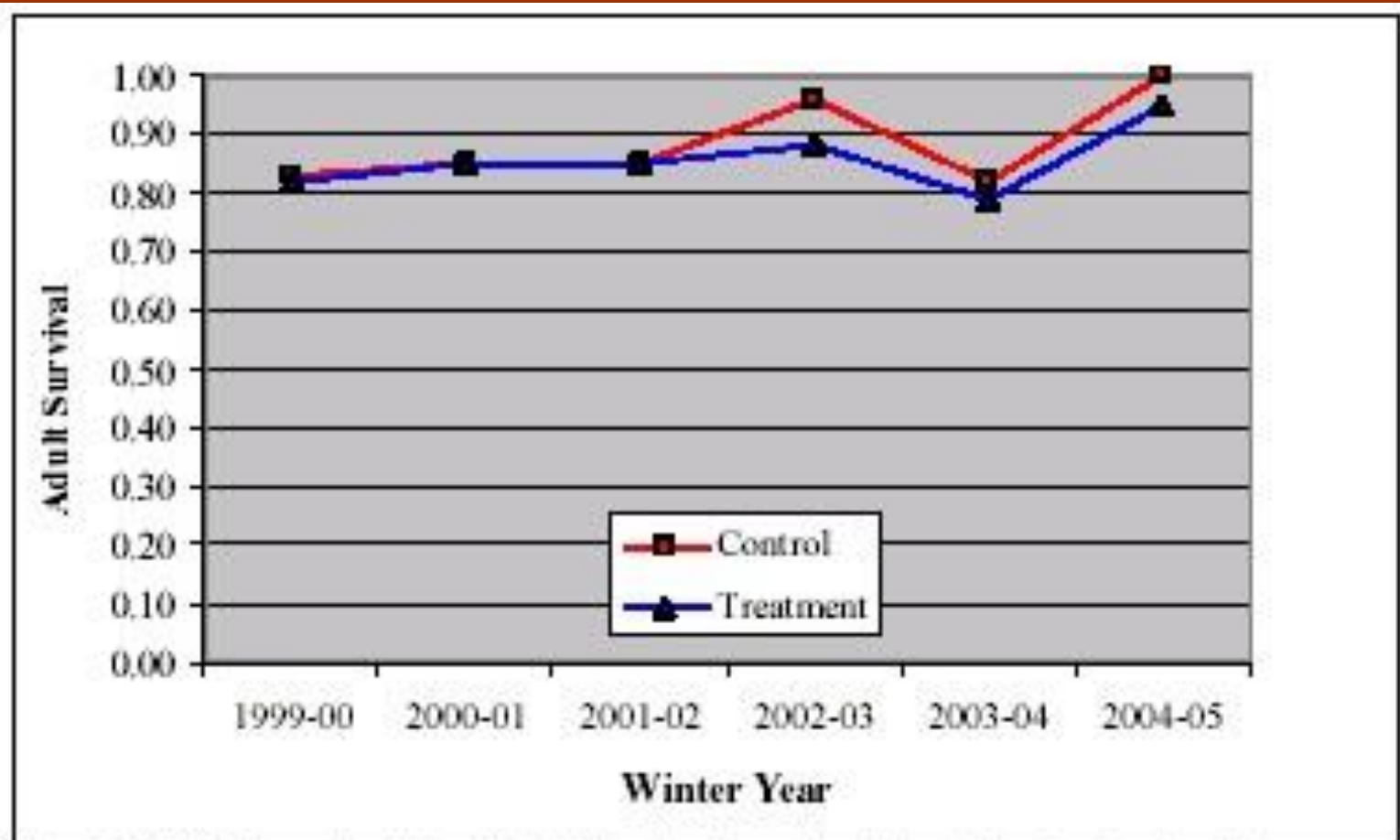


Figure 2.14 Winter survival rates of adult female radio-collared deer in treatment and control areas, 1999-2005.

Figure 2.20

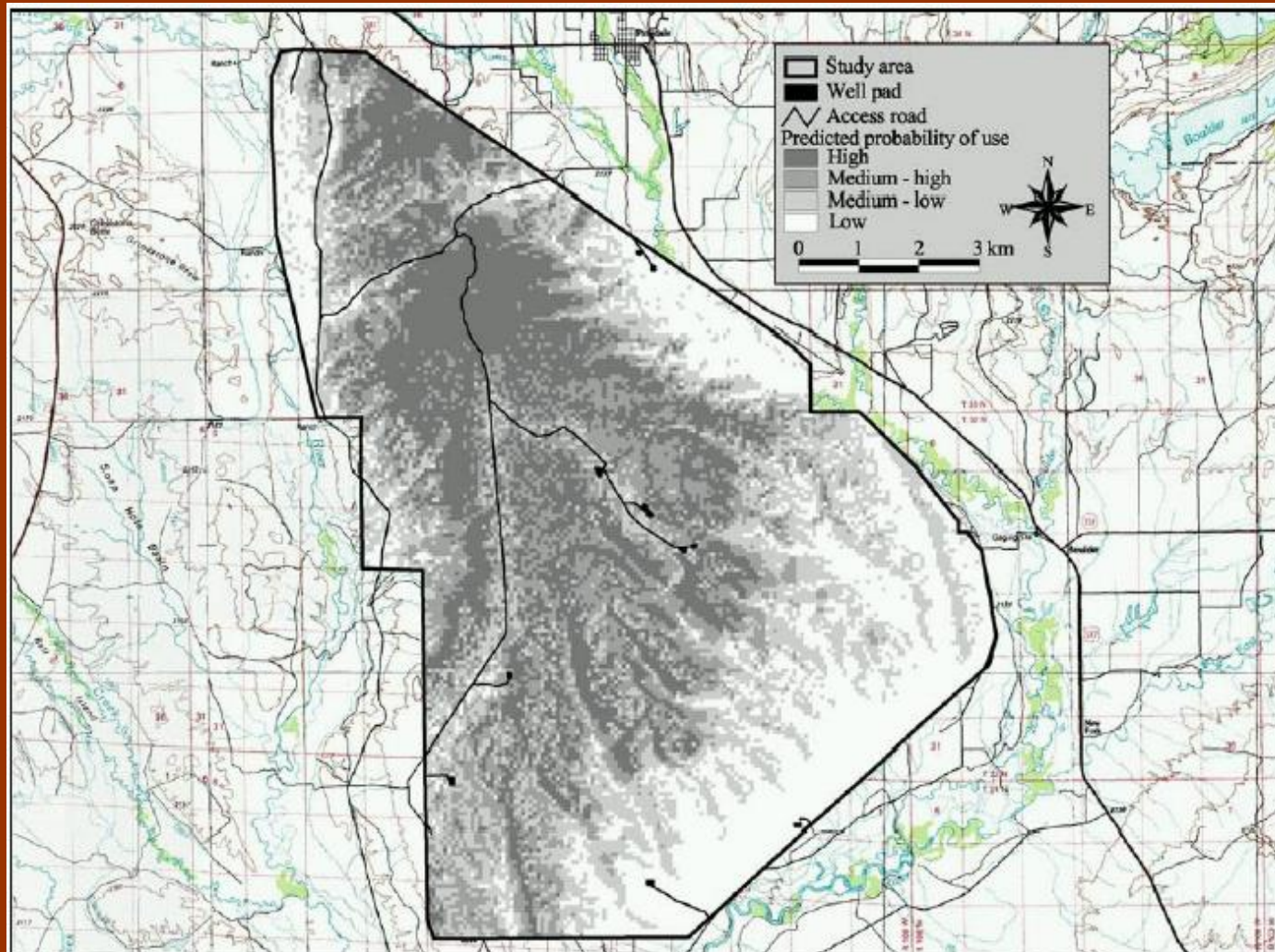


Figure 2.20. Predicted probabilities and associated categories of mule deer habitat use during 1998-99 and 1999-2000 winters, prior to natural gas field development in western Wyoming.

Figure 2.23

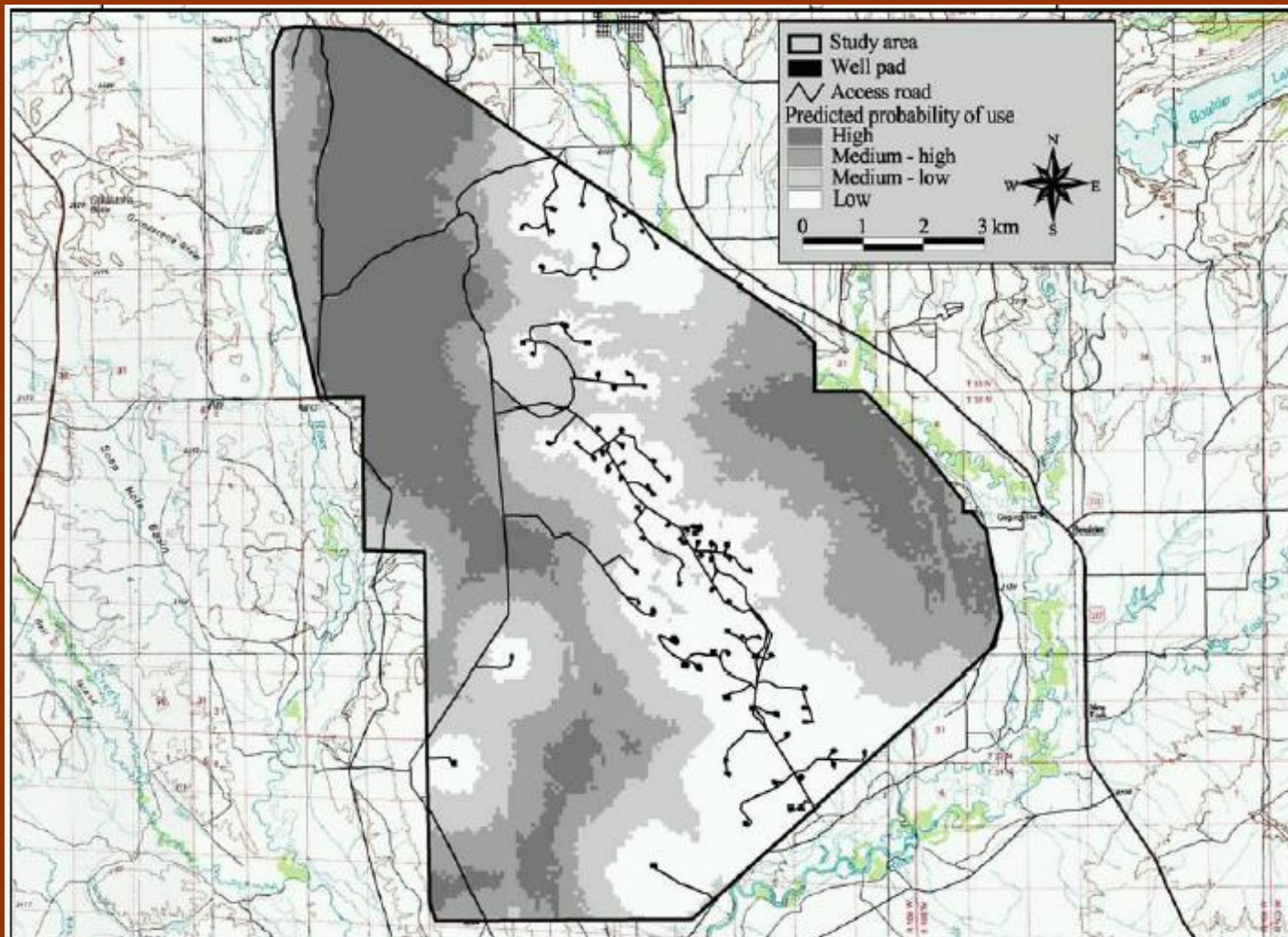


Figure 2.23. Predicted probabilities and associated categories of mule deer habitat use during Year 3 (winter of 2002-03) of natural gas development in western Wyoming.

Figure 2.24

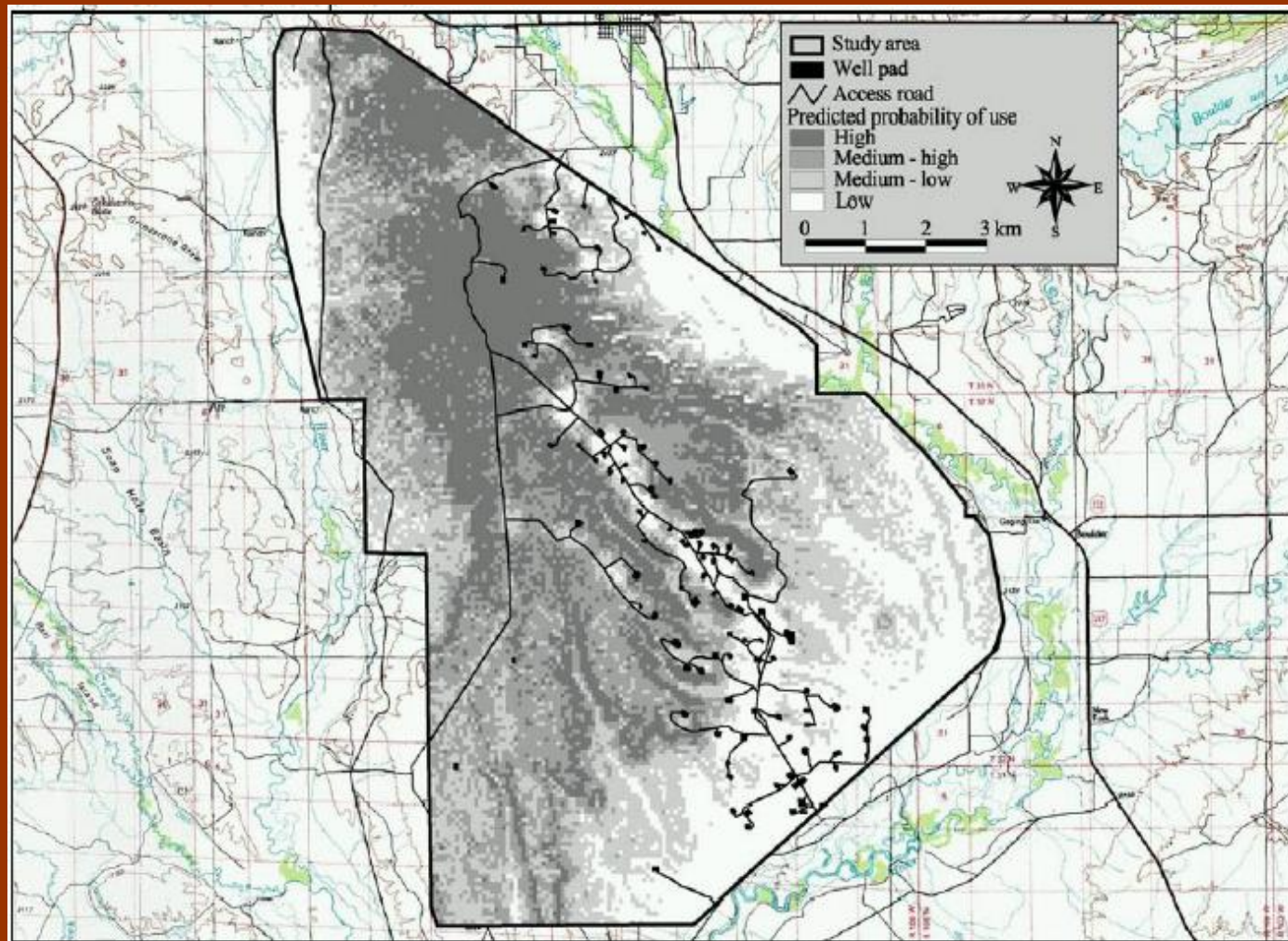


Figure 2.24. Predicted probabilities and associated categories of mule deer habitat use during Year 4 (winter of 2003-04) of natural gas development in western Wyoming.

Figure 2.4

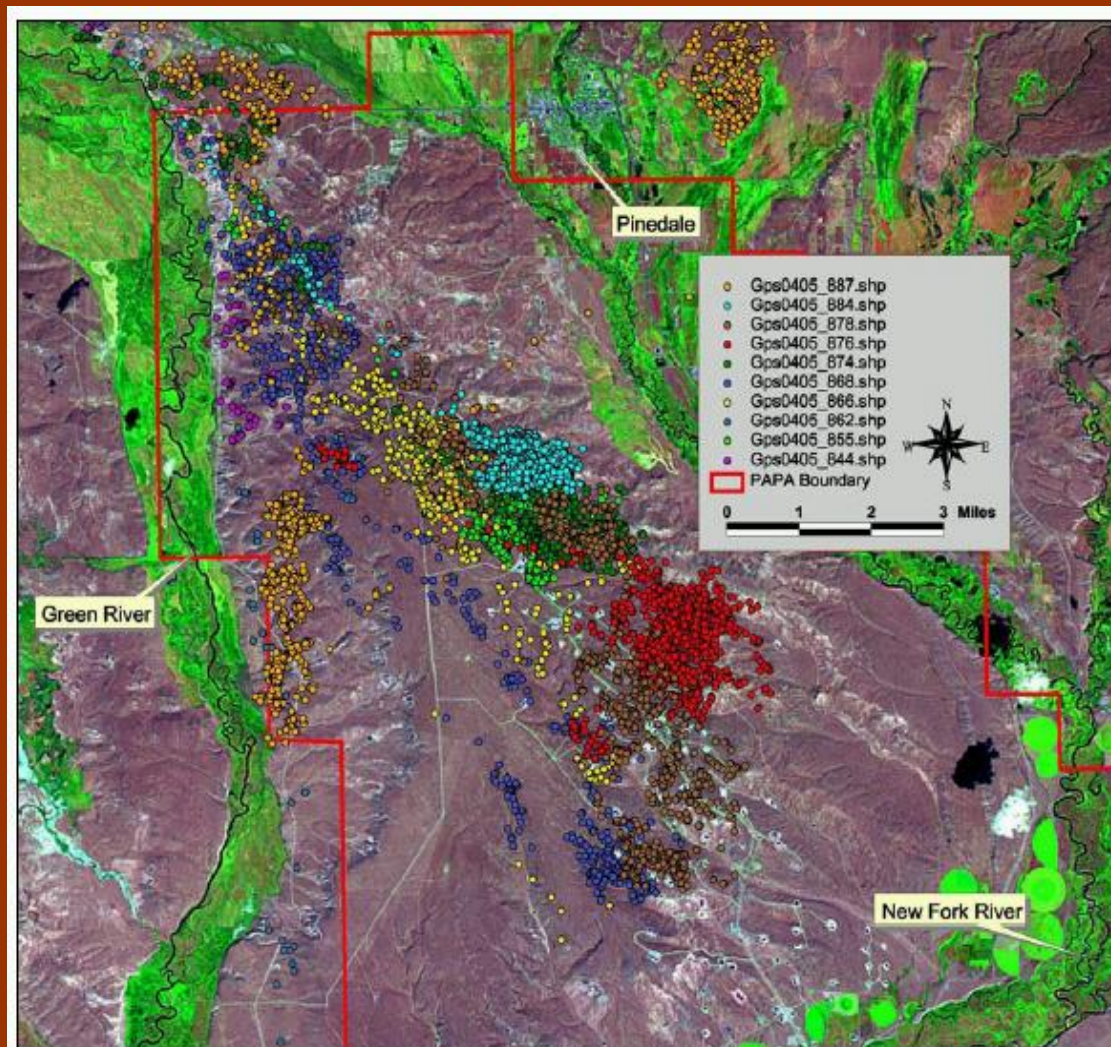


Figure 2.4. GPS locations ($n = 15,974$) collected from 10 deer on the Pinedale Anticline Project Area (PAPA), November 1, 2004 – April 15, 2005, overlaid on satellite image taken August 28, 2004.



L. Poe Leggette, Partner
Fulbright & Jaworski L.L.P.
pleggette@fulbright.com
202-662-4646